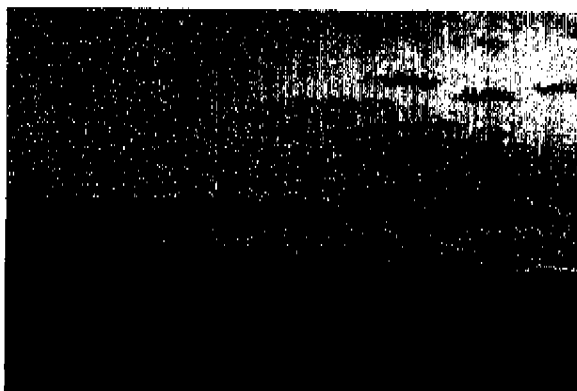
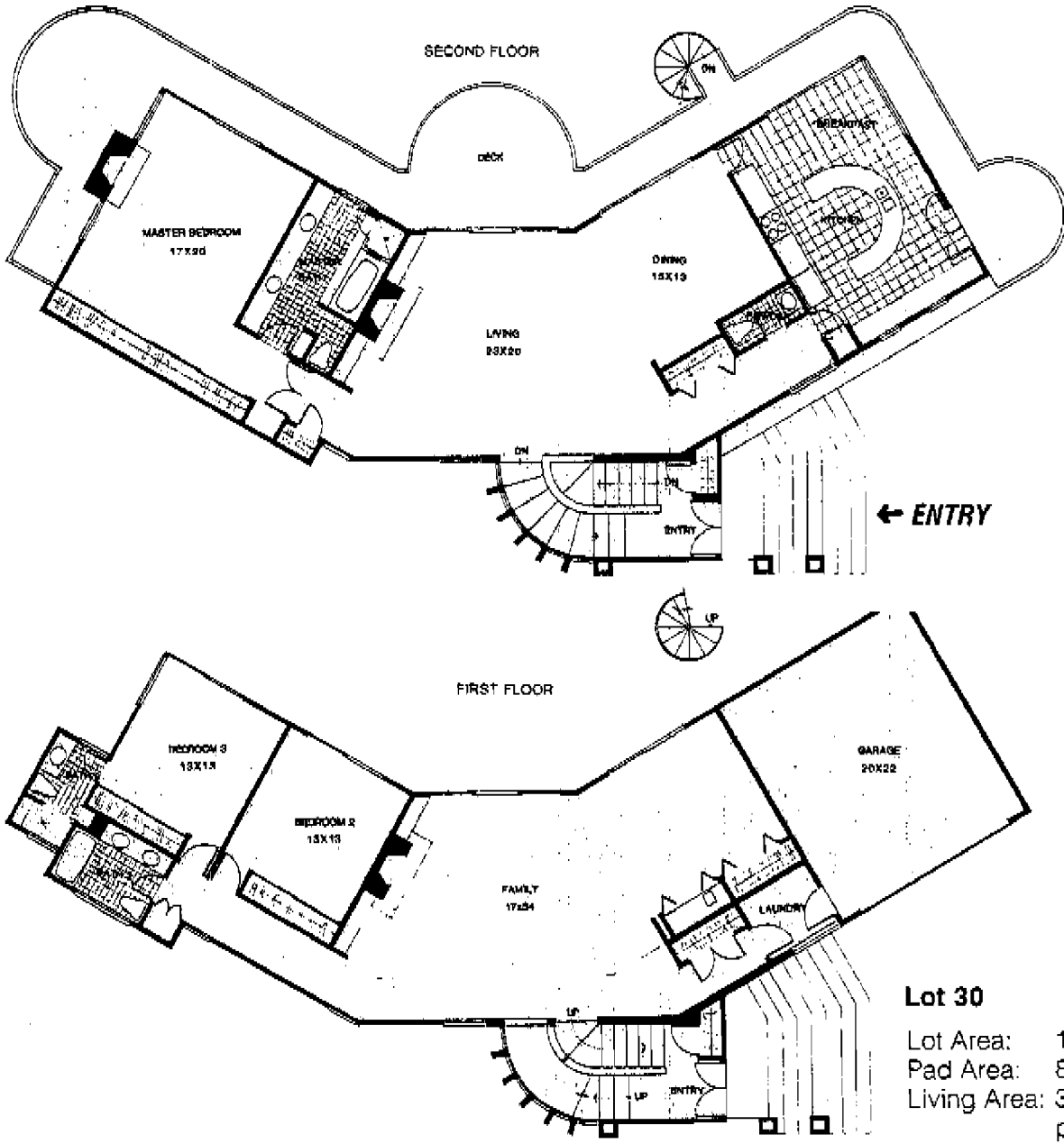


**Lot 28**

Lot Area: 5,971 square feet  
 Pad Area: 5,823 square feet  
 Living Area: 3,272 square feet  
 plus two-car garage

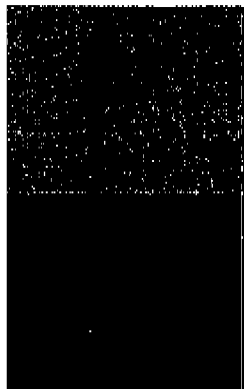
OR

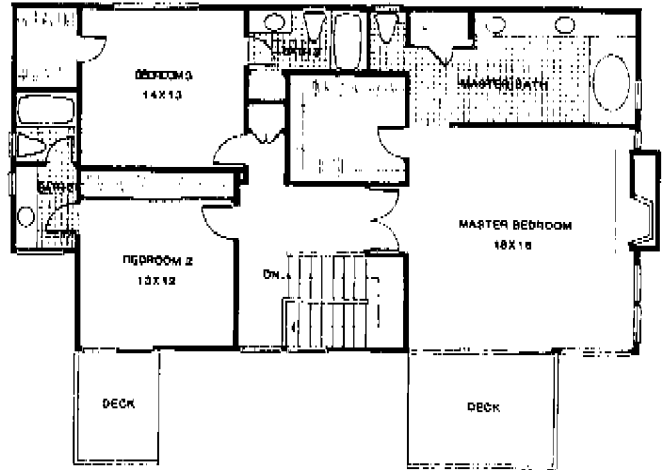
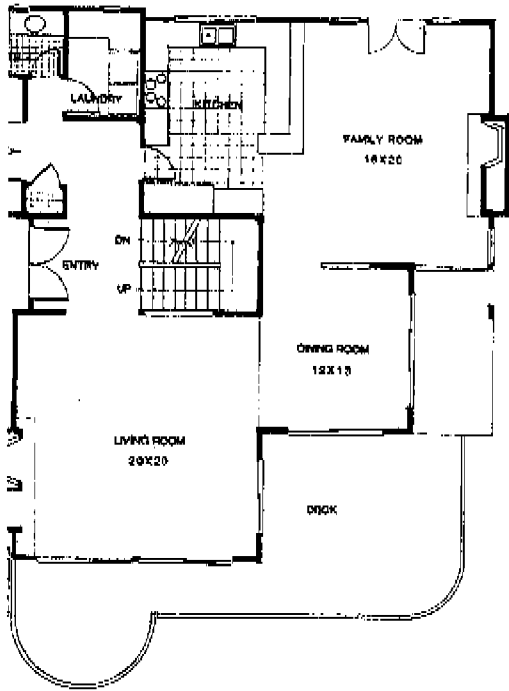




**Lot 30**

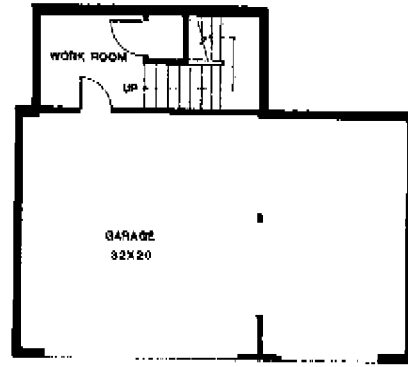
Lot Area: 10,210 square  
 Pad Area: 8,010 square  
 Living Area: 3,540 square  
 plus two-car



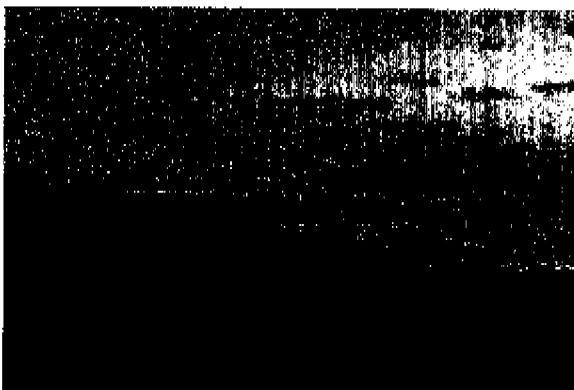


SECOND FLOOR

13,043 square feet  
 5,040 square feet  
 3,066 square feet  
 plus three-car garage



BASEMENT

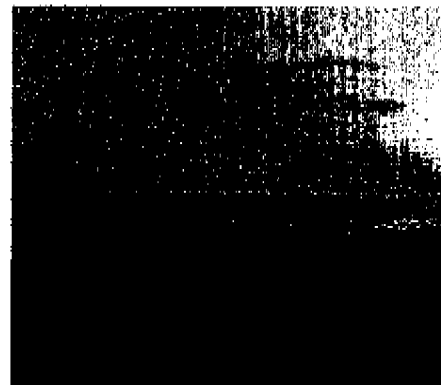
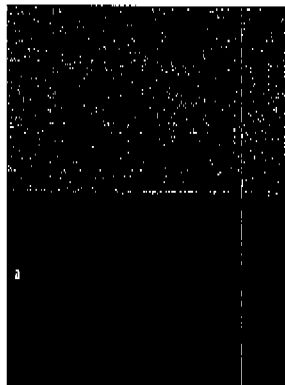
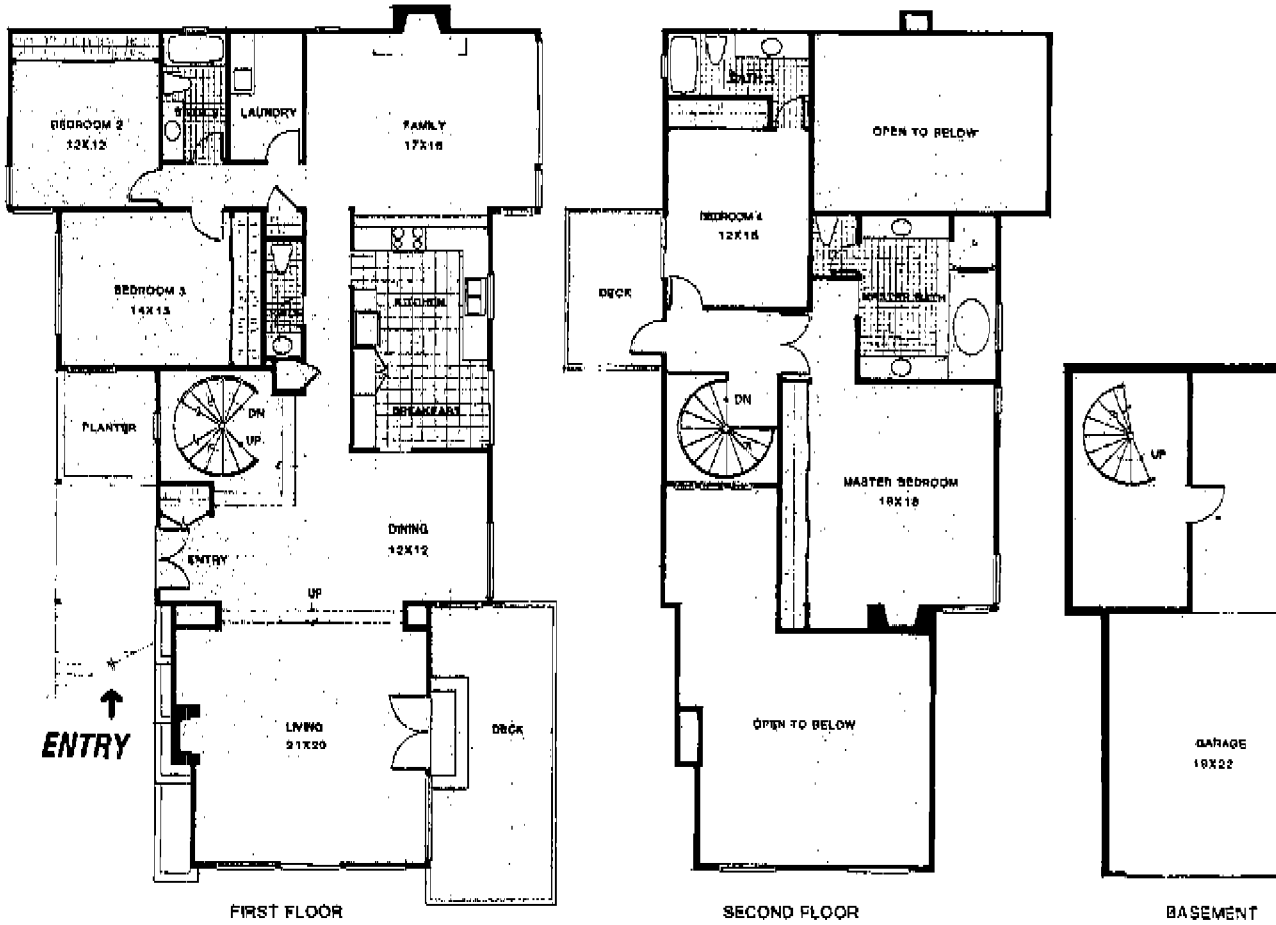


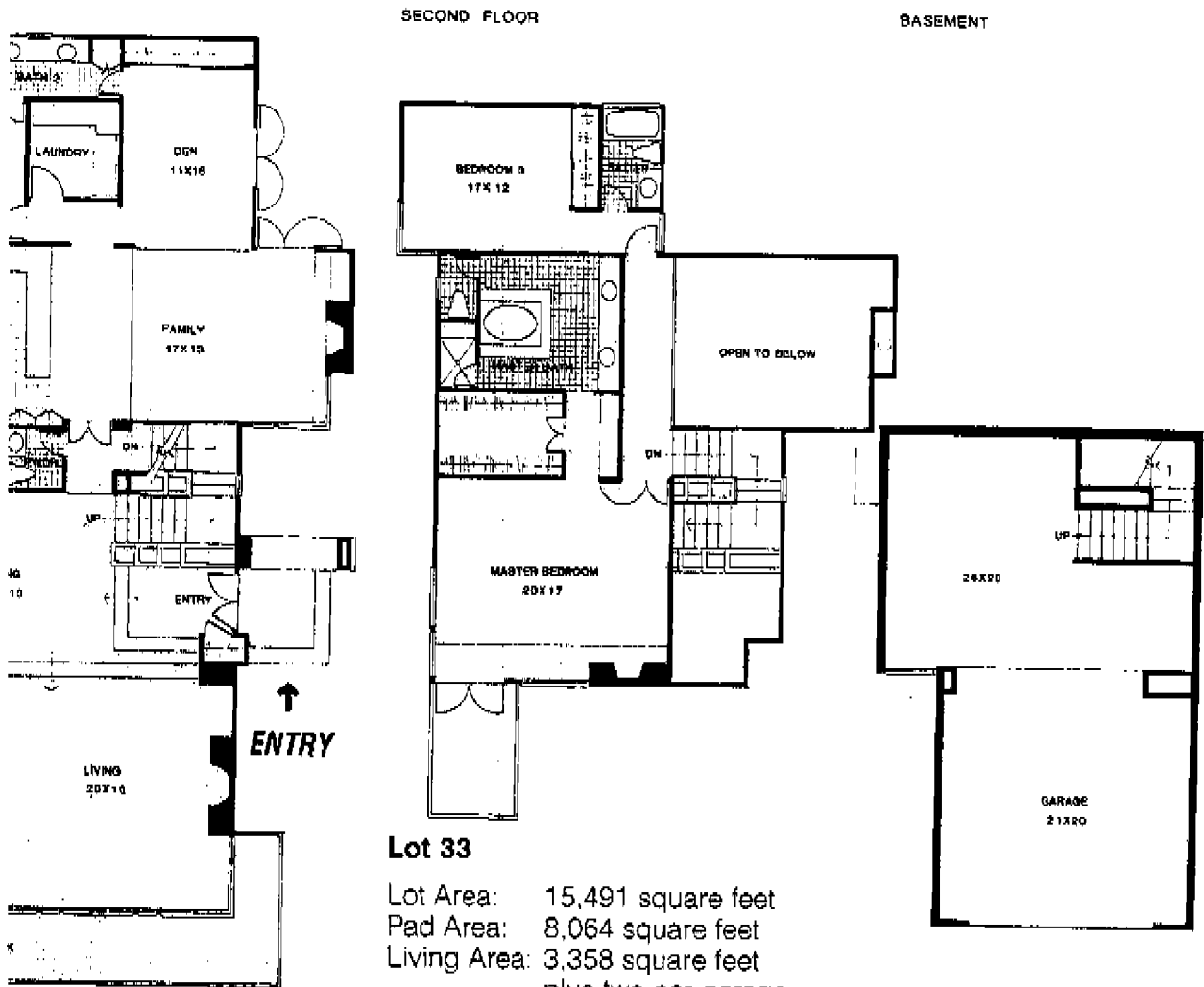
**Lot 32**

Lot Area: 11,939 square feet

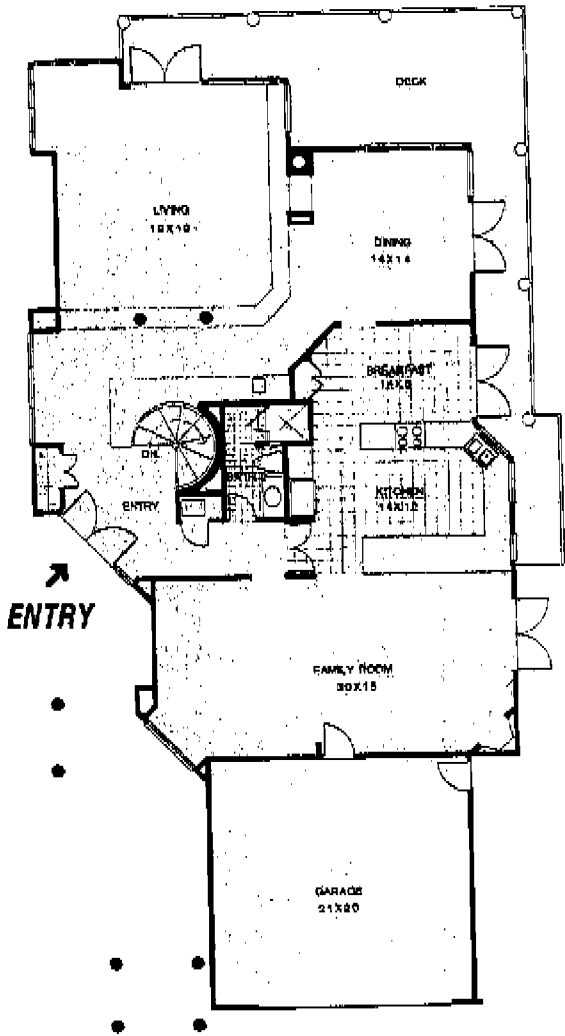
Pad Area: 5,463 square feet

Living Area: 3,130 square feet  
plus two-car garage

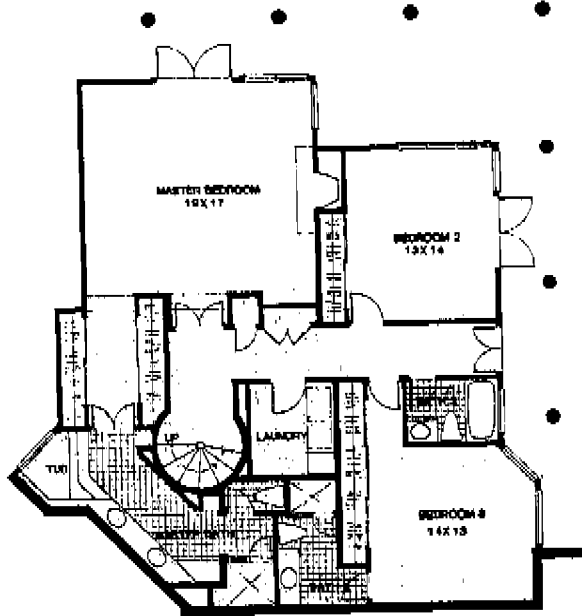




SECOND FLOOR

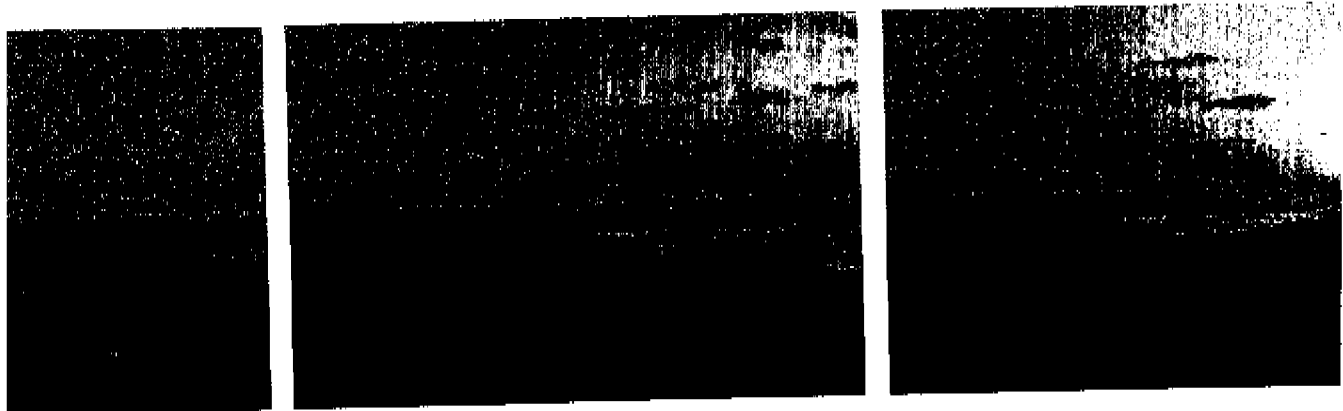


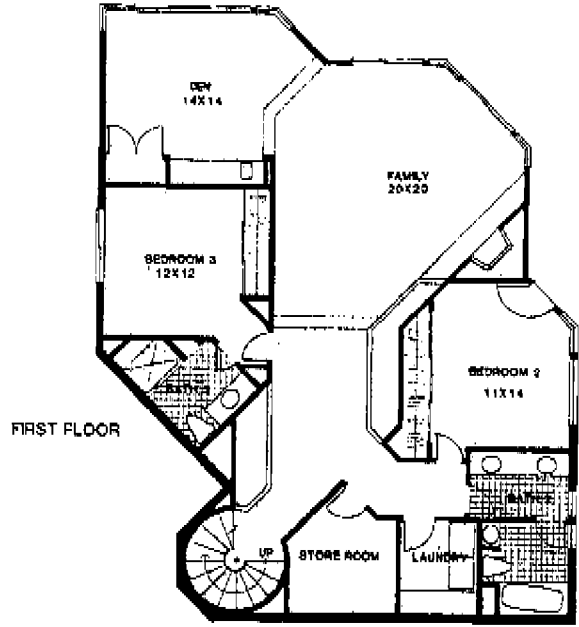
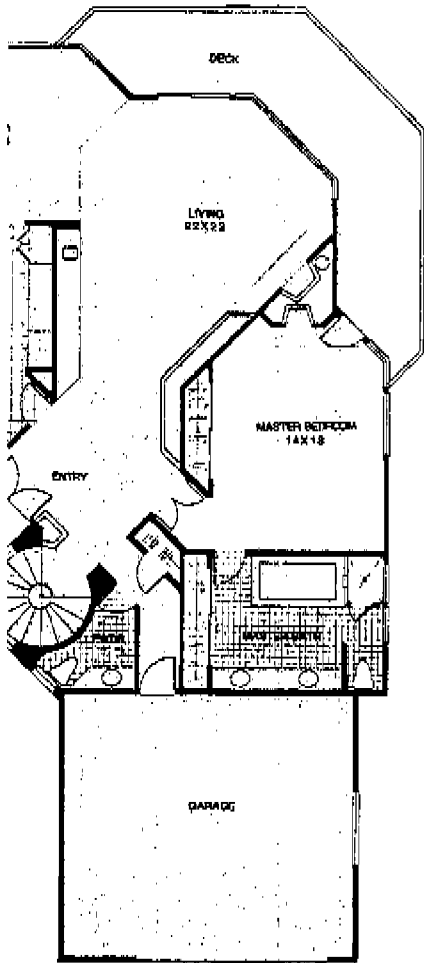
FIRST FLOOR



Lot 36

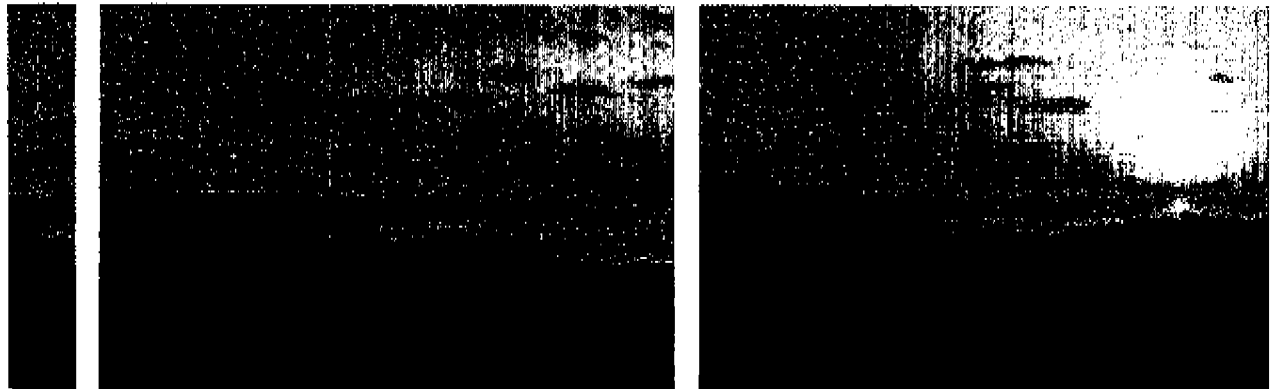
Lot Area: 7,288 square feet  
 Pad Area: 4,995 square feet  
 Living Area: 3,247 square feet  
 plus two-car garage





FIRST FLOOR

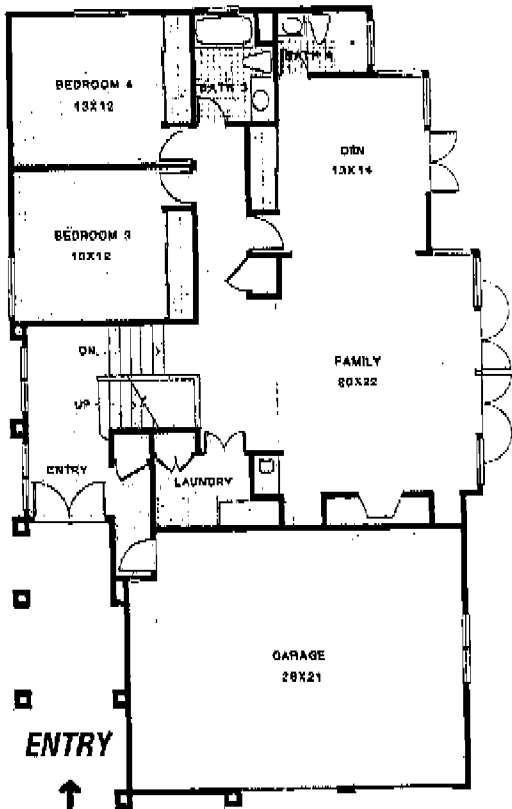
**Lot 38**  
Lot Area: 8,874 square feet  
Pad Area: 5,463 square feet  
Living Area: 3,414 square feet  
plus two-car garage



**Lot 39**

Lot Area: 9,025 square feet  
Pad Area: 4,950 square feet  
Living Area: 3,443 square feet  
plus two-car garage

FIRST FLOOR



SECOND FLOOR

